



NORTHSPRING

CHAPEL WALKS

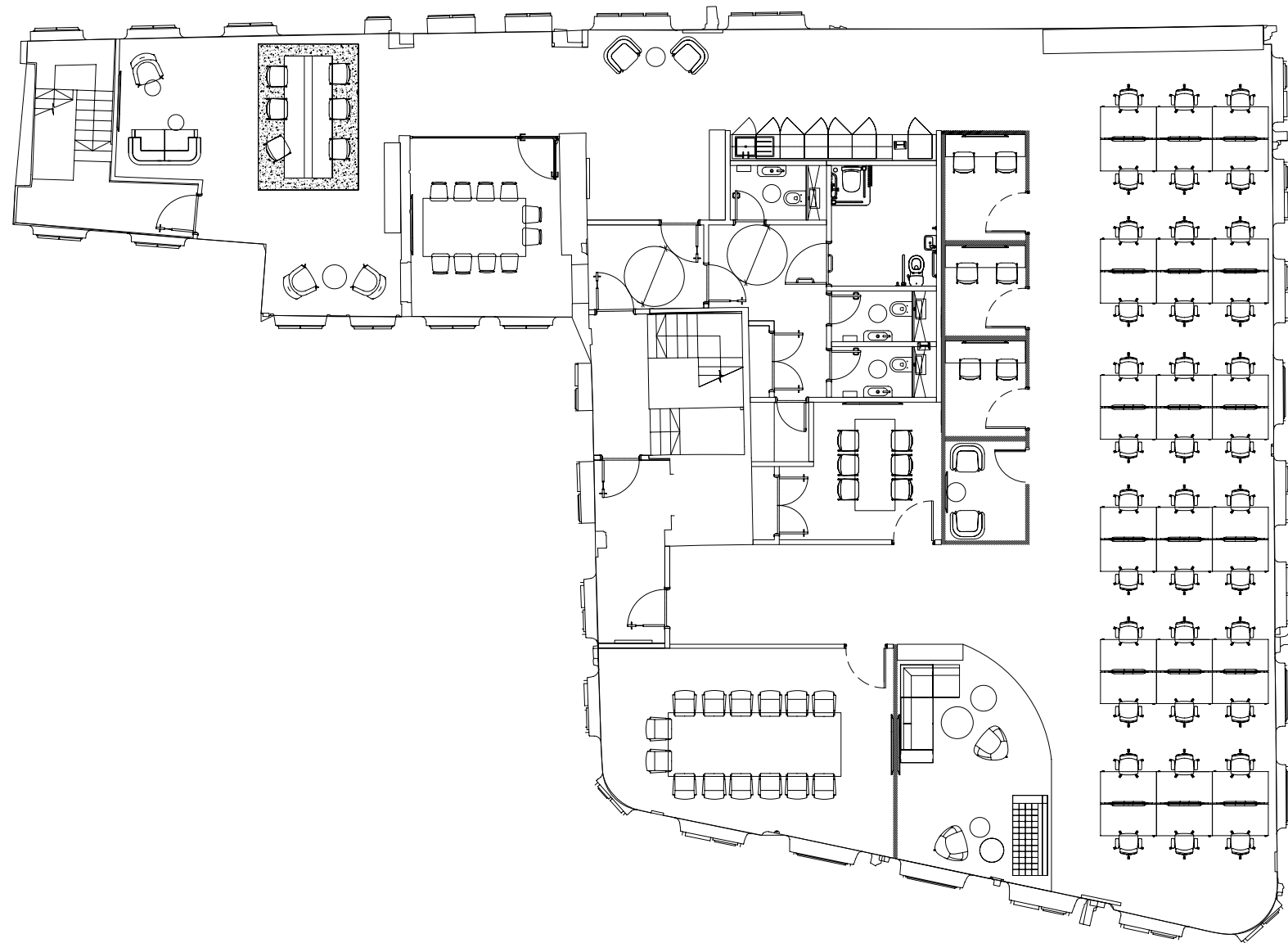
ANOTHER CLASS OF OFFICE

NORTHSPRING.COM



NORTHSPRING
CHAPEL WALKS

3RD FLOOR



3RD FLOOR



NORTHSRING
CHAPEL WALKS





NORTHSPRING

YOUR OFFICE REDEFINED

CBRE

Mark Garner
mark.garner@cbre.com
07799 625 236

Luke Fairbank
luke.fairbank@cbre.com
0787 689 2387

Sixteen.

Nick Nelson
nick@sixteenrealestate.com
07842 714 043

Rosie Veitch
rosie@sixteenrealestate.com
07746 249 920

CHAPEL WALKS
MANCHESTER
M2 1HN

NORTHSPRING.COM