

# NORTHSPRING

PETER ST

ANOTHER CLASS OF OFFICE

[NORTHSPRING.COM](http://NORTHSPRING.COM)



# PETER STREET

NORTHSRING  
PETER ST

SEVEN  
SIX  
FIVE  
FOUR  
THREE  
TWO  
ONE

# A MANCHESTER CLASSIC

Introduction	04
Lifestyle	05
Building Specification	07
The Park	09
The Club	10
Floor Plans	11
Location	19
Contacts	21



# ELEGANCE IS THE ONLY BEAUTY THAT NEVER FADES

Our beautiful workspace is designed to be enjoyed.

Prominently located in the heart of Manchester's traditional business core, Northspring Peter Street is the perfect place for your business.

Designed with the occupier in mind, our spaces include boutique furnishings inspired by the history of the building.

In addition to your own private office, you'll have a wealth of amenities included for you and your employees to use.



# A PLACE WHERE ELEGANCE MEETS FUNCTIONALITY

We're not a co-working office, however our communal spaces promote collaboration and community.

Peter Street is a modern building which has been completely reimagined to create a brand new, boutique office offering.

Boasting up to 9 private offices over 7 floors, you have the option to take one or multiple suites to fit the needs of your business.

Our high-spec fixtures and fittings combined with the latest workspace technologies make working from Northspring seamless.

The Club, located on the first floor, is a luxury business lounge featuring zoom booths, communal workspace and hot design as well as a refreshments bar and 12 person meeting room.





High spec fixtures and fittings as well as the very latest workplace technologies complement the stylish interior inspired by the roaring twenties.

7  
FLOORS

9  
EXCLUSIVE  
WORKSPACES

SUITES FROM  
1,300 Sq Ft



# WORK LIFE BALANCED

The average person spends over 90,000 hours of their life at work. We want to help make those hours enjoyable.

Recent studies have shown that unhealthy work environments can lead to burnout and employees suffering with stress. With this in mind, wellness is an integral part of the Northspring model.

Occupiers will have free access to the on-site fitness studio at Peter Street, which boasts state-of-the-art gym equipment and can be booked through the concierge at your ease. The secure cycle storage, lockers, showers, and changing rooms ensure the transition from workout to work is smooth, and provides your staff with everything they need within the building to lead a balance lifestyle.

Amenities at neighbouring Northspring offices can also be utilised by occupiers. The nearby Spring Gardens boasts a second gym and an impressive private roof terrace; why not head over for a change of scenery or up to the roof for some fresh air with fantastic views of Manchester.



# THERE IS BEAUTY IN EVERYTHING

## BUILDING SPECIFICATION

### Every detail matters and we have considered them all

With a concierge style front-desk, plug and play connectivity, breakout space, cycle hub and high-spec fitness suite, Northspring provides a full range of high-quality amenities. This sits alongside initiatives that will help you become a part of this exciting community.



LED Strip Lighting



Gym/Fitness Suite



Plug & Play Connectivity



Shower Facilities & Lockers



Secure Access



Cycle Storage



2 x Passenger Lifts



Furniture Package



24/7 Access



Manned Reception



Hot Desking



Meeting Room Facilities



Roof Terrace



Secure Basement Parking



2 E-parking bays



# LEASING OPTIONS

At Northspring, customisation meets convenience for your premium office.

That's why our flexible office solutions are designed to adapt to your unique business needs. From traditional leases to made & measured or all-inclusive packages, you have the freedom to shape a space that suits your vision.

## Traditional Lease Occupier Fit-Out



Enjoy the flexibility of your own front door with 24/7 access, transparent terms, and the option to add fibre-ready connectivity.

This option gives you the responsibility to design, fit out, and personalise your office to meet your business needs.

## Traditional Lease Made & Measure



Enjoy all the benefits of a traditional lease at Northspring, with the added option to create a bespoke package.

Select from our range of services to tailor your office experience.

## All-Inclusive Made & Measured



Choose all-inclusive, where your office suite comes fully fitted and furnished for your convenience.

Plus, all services are covered in a single, straightforward monthly payment.

WITH THESE LEASING OPTIONS, UPGRADING TO A LUXURY OFFICE IS EASIER THAN EVER.

	Traditional Lease Occupier Fit-Out	Traditional Lease Made & Measured	All-Inclusive Made & Measured
24/7 access and your own front door	✓	✓	✓
Access to luxury amenities	✓	✓	✓
Transparent terms	✓	✓	✓
Fibre connectivity cable ready	✓	✓	✓
Fitted & furnished to your specification		✓	✓
All-inclusive monthly payment			✓
Internal suite cleaning & maintenance			✓
Service charge, business rates, building insurance			✓
Utilities			✓
Internet Line			✓

# WORK AT NORTHSRING NATIONALLY

When you become part of the Northspring family, you get access to luxury amenities across all Northspring properties.



SPRING GARDENS



WELLINGTON ST



TEMPLE ST



SPRING GARDENS  
KING ST  
PETER ST  
CHAPEL WALKS

WELLINGTON ST  
PARK ROW

TEMPLE ST

# THE PARK

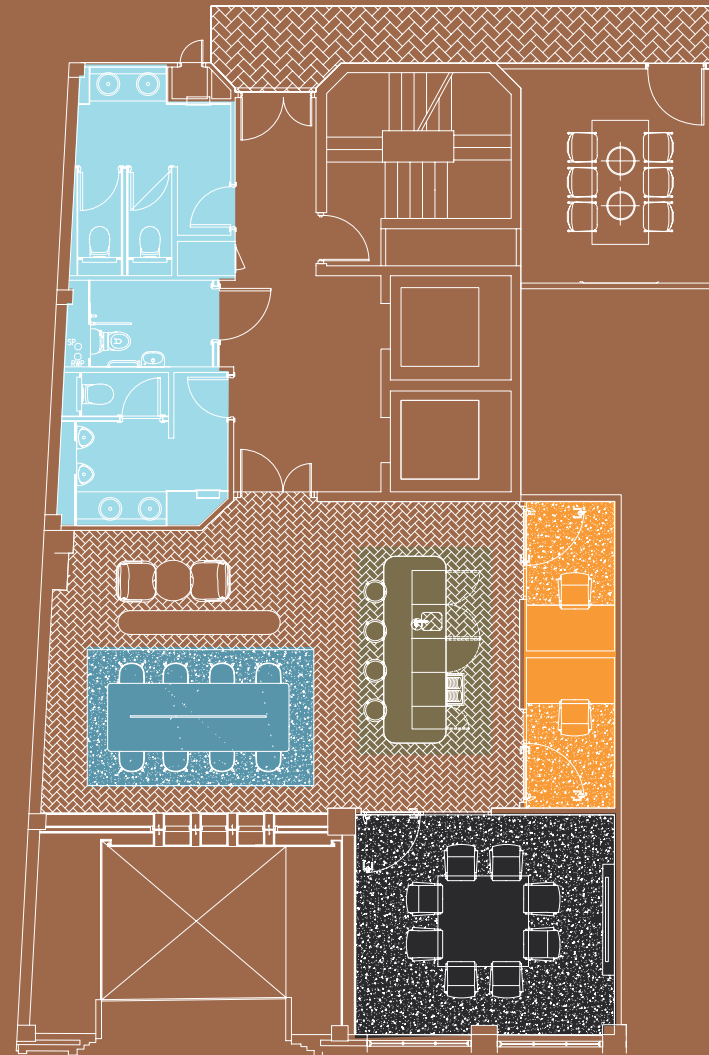
SPACE	KEY
Gym	●
Changing Rooms & Showers	●
Drying Room	●
Cycle Store	●
Car Park	●



PETER STREET

# THE CLUB

SPACE	KEY
Meeting Rooms	●
Kitchenette	●
Zoom Booths	●
Breakout Space	●
Toilets	●



PETER STREET

# GROUND FLOOR

SPACE	SQ M	SQ FT
A		LET

- Short Stay Lounge Seating ●
- Stairwell ●
- Concierge ●

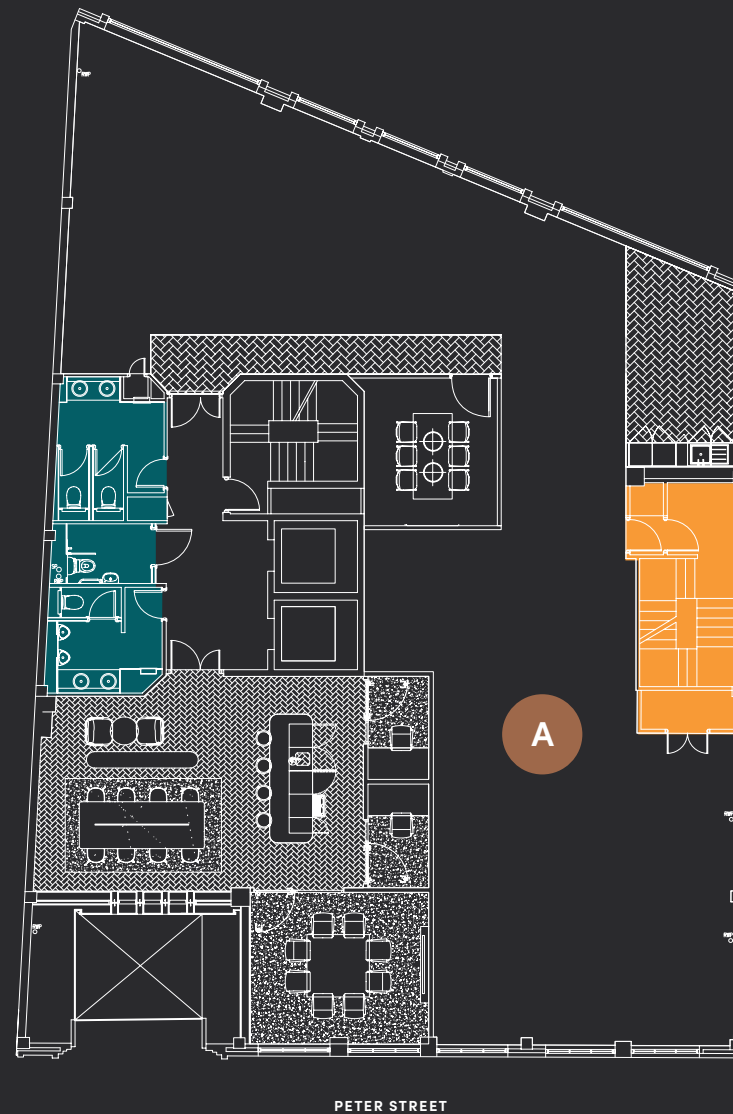


All measurements are subject to change.

# FLOOR ONE

OFFICE SPACE	SQ M	SQ FT
A	238	2,564

- Stairwell ●
- Toilets ●



Indicative split. Whole floor plates available.  
All measurements are subject to change.

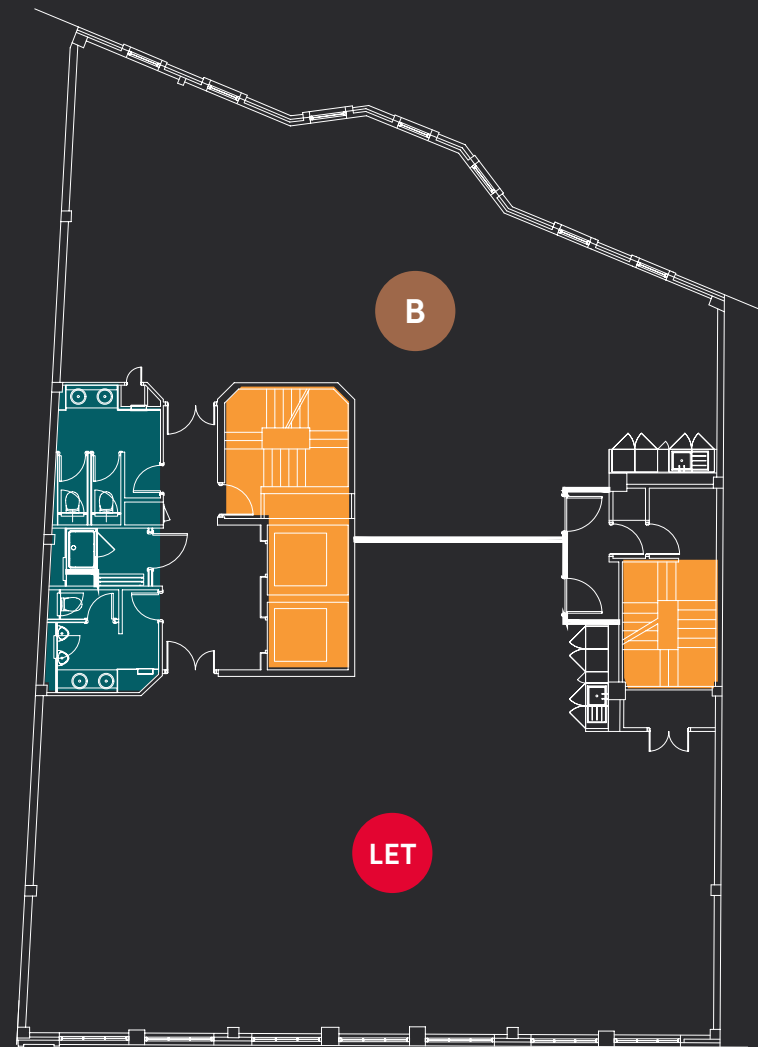
# FLOOR TWO

OFFICE SPACE	SQ M	SQ FT
A		LET
B	135	1,450

Stairwell



Toilets



PETER STREET

Indicative split. Whole floor plates available.  
All measurements are subject to change.

# FLOOR THREE

OFFICE SPACE	SQ M	SQ FT
A		LET

Stairwell	●
Toilets	●



All measurements are subject to change.

# FLOOR FOUR

OFFICE SPACE	SQ M	SQ FT
A		LET

Stairwell	●
Toilets	●



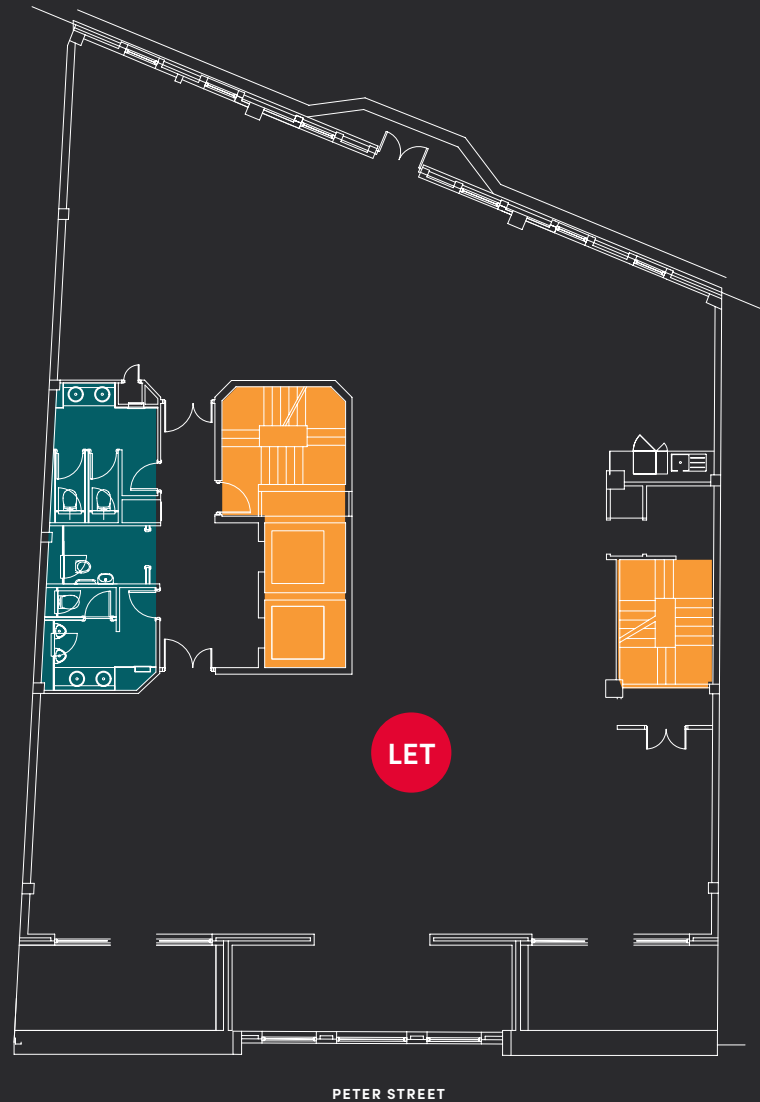
All measurements are subject to change.

# FLOOR FIVE

OFFICE SPACE	SQ M	SQ FT
A		LET

Three roof terraces with views of the city

Stairwell	●
Toilets	●



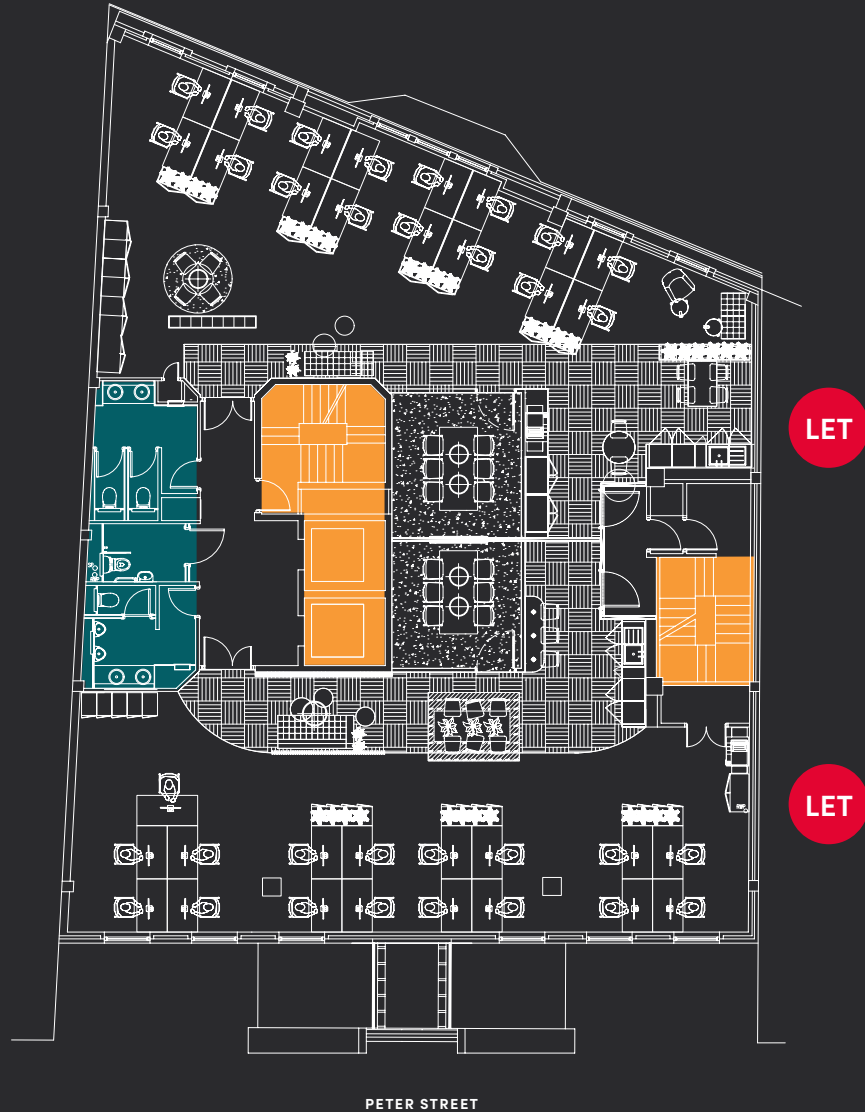
vAll measurements are subject to change.

# FLOOR SIX

OFFICE SPACE	SQ M	SQ FT
A		LET
B		LET

This floor comes fully fitted out with high-grade furnishings

- Stairwell ●
- Toilets ●



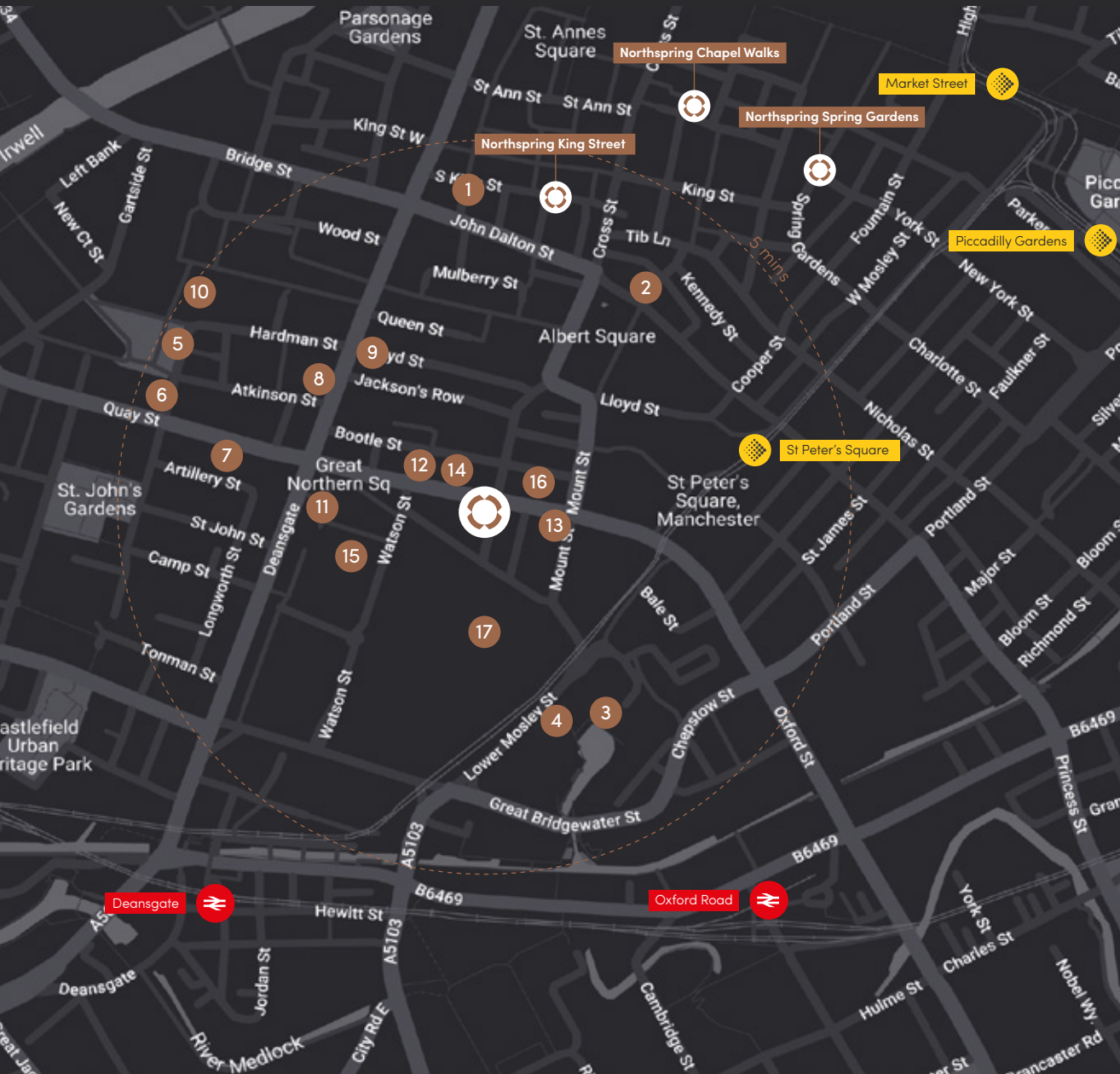
Indicative split. Whole floor plates available.  
All measurements are subject to change.

# FLOOR SEVEN

OFFICE SPACE	SQ M	SQ FT
A		LET

- Stairwell ●
- Toilets ●





# PERFECTLY POSITIONED

## Peter St, Manchester M2 5GP

Northspring is perfectly located to give you access to all Manchester city centre has to offer. Northspring couldn't be better positioned for transport links, with the city's main bus, Metrolink and train stations all within 10 minutes on foot, it is simple to travel to all major connections across the country.

Manchester's business, shopping and leisure districts such as Spinningfields, Chinatown and the Northern Quarter are minutes away.

1. La Bandera
2. Piccolinos
3. Society
4. The Bridgewater Hall
5. The Ivy Spinningfields
6. 20 Stories
7. The Blues Kitchen
8. Hawksmoor
9. Gusto
10. The Alchemist
11. Cibo
12. Albert's Schloss
13. Haunt MCR
14. Rudy's
15. Almost Famous
16. Ezra and Gil
17. Manchester Central

### ON FOOT

Piccadilly Station	10 min
Victoria Station	10 min
Northern Quarter	8 min
Spinningfields	7 min
Deansgate	6 min
Market Street	4 min

### METROLINK

Manchester Airport	40 min
East Didsbury	30 min
Ashton-under-Lyne	30 min
Bury	25 min
Media City	20 min
Altrincham	20 min

### RAIL

London	2 hours
Edinburgh	3.5 hours
Birmingham	1.5 hours
Newcastle	1.5 hours
Leeds	1 hour
Liverpool	1 hour



# NORTHSPRING

PETER ST

**Sixteen.**

Nick Nelson  
nick@sixteenrealestate.com  
07842 714 043

Rosie Veitch  
rosie@sixteenrealestate.com  
07746 249 920

**Colliers**

Ella Millington  
ella.millington@colliers.com  
07880 631 037

Jonathan Cook  
jonathan.cook@colliers.com  
07702 976 062

PETER ST  
MANCHESTER  
M2 5GP

NORTHSPRING.COM

Misrepresentation Act.  
Sixteen Real Estate for themselves and for the vendors or lessors of this property, whose agents they are give notice that: a) all particulars are set out as general outline only for the guidance of intending purchasers or lessees, and do not comprise part of an offer or contract; b) all descriptions, dimensions, references to condition and necessary permissions for use and occupation, and other details are given in good faith and are believed to be correct but any intending purchasers or tenants should not rely on them as statements or representations of fact but must satisfy themselves by inspection or otherwise as to the correctness of each of them; c) no person in the employment of Sixteen Real Estate has any authority to make any representation of warranty whatsoever in relation to this property.